

INSTALLATION INSTRUCTIONS FOR FFO-2RM DUAL RELAY MODULE

The information contained in this installation instruction is a quick reference guide. For detailed system information refer to the panel manufacturer's installation manual. This instruction will not address specific programming procedure.

GENERAL DESCRIPTION

This instruction applies to the DCP Dual Relay Module (FFO-2RM) which is to be connected to a DCP Signaling Line Circuit (SLC). The FFO-2RM provides two separately controlled sets of Form C dry relay contacts for general purpose control functions at one address point. Typical applications are where normally open or normally closed contacts are needed. Examples are: elevator recall, door closure, turning fans on or off, and auxiliary indications.

MOUNTING REQUIREMENTS

The DCP Relay module is mounted as shown in Figures 2 and 2A on page 2 of this instruction.

WIRING

NOTE: All wiring must conform to local codes, ordinances and regulations

- 1) Install module wiring in accordance with the job drawings and appropriate wiring diagram (see Fig.3).
- 2) Secure the module to a U.L. listed electrical box (supplied by installer), as shown in Figures 2 and 2A.
- 3) Address must be set before cover plate is attached with no loop power applied, or the loop wires disconnected (see Figure 1).

NOTE: An average of 6.75mA (communication current) per loop of SLC devices, must be factored into the panel battery backup calculations.

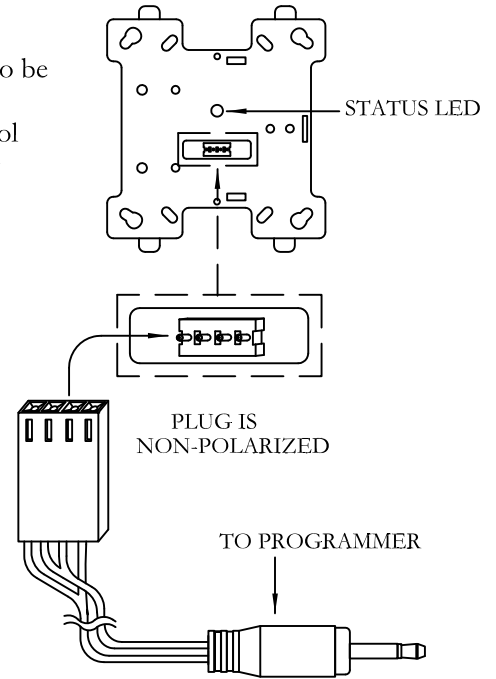


FIGURE 1.
EXPLODED VIEW OF ADDRESS
PROGRAMMING PLUG AND CONNECTOR

CAUTION !!!
TO ENSURE PROPER
OPERATION CONNECT THIS
MODULE TO A COMPATIBLE
FIRE CONTROL PANEL ONLY.
REFER TO PANEL
INSTRUCTIONS FOR PROPER
CONNECTION AND
COMPATIBILITY.

CAUTION !!!
If this module will be installed in an existing
operational system, inform the operator
and local authority that the system will be
temporarily out of service.
Disconnect power to the control panel
before installing the module

SPECIFICATIONS

| | |
|-------------------------------|--|
| SLC Applied Voltage | Rated Range 25.3 – 39 VDC |
| SLC Current Consumption | Maximum 400µA Nominal 390µA |
| Relay Contact Ratings | 1A @ 30VDC Power Factor 0.35 or 0.5A @ 120VAC Power Factor 0.35 |
| Visual Indicator (Status LED) | bi-color LED – Green & Red Color & Mode – Selected and Programmed by Control Panel's software |
| Operating Temperature Range | 0°C (32°F) ~ 49°C (120°F) |
| Storage Temperature Range | -30°C (-22°F) ~ 70°C (158°F) |
| Maximum Relative Humidity | Up to 90% RH non-condensing |
| Environment | Indoor dry use only |
| Dimensions | 4.2"W X 4.7"H X .85"D |
| Weight | Approximately 3.0 ounces |

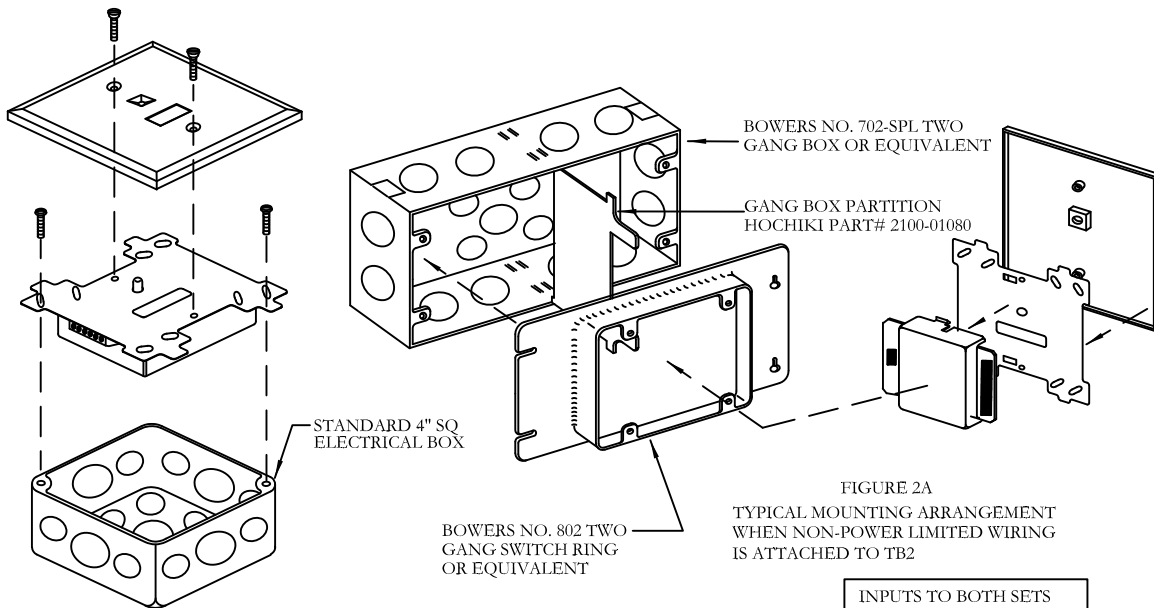


FIGURE 2
TYPICAL MOUNTING ARRANGEMENT
WHEN POWER LIMITED WIRING IS
ATTACHED TO TB2

FIGURE 2A
TYPICAL MOUNTING ARRANGEMENT
WHEN NON-POWER LIMITED WIRING
IS ATTACHED TO TB2

INPUTS TO BOTH SETS OF FORM "C" CONTACTS MUST BE EITHER POWER LIMITED OR NON-POWER LIMITED. DO NOT MIX POWER LIMITED WIRING WITH NON-POWER LIMITED WIRING ON TB2.

ALL WIRING SHOWN ON TB2 IS NOT SUPERVISED. CONTACTS ARE SHOWN IN STANDBY MODE - REFER TO CONTROL PANEL'S OPERATION MANUAL FOR PROPER RELAY OPERATION AND CONFIGURATION.

CROSS OUT TYPE OF WIRING NOT USED WITH A PERMANENT MARK

Note: SLC circuit is in reference to S, and SC

U.L. LISTED COMPATIBLE FIRE CONTROL PANEL

ALL WIRING SHOWN ON TB1 IS SUPERVISED AND INHERENTLY POWER LIMITED

NOTE: Only the same size wire from 12 to 22 AWG may be connected terminal block TB1 when more than one conductor is being connected under each terminal. Maximum of 2 conductor per terminal.

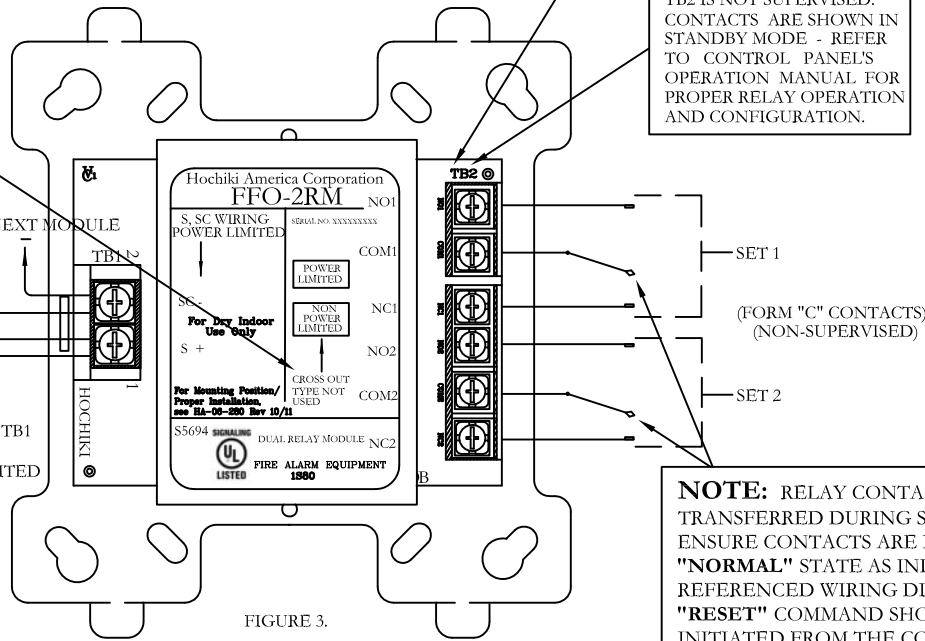


FIGURE 3.
WIRING DIAGRAM

NOTE: RELAY CONTACTS MAY HAVE TRANSFERRED DURING SHIPPING. TO ENSURE CONTACTS ARE IN CORRECT "NORMAL" STATE AS INDICATED IN REFERENCED WIRING DIAGRAM, A "RESET" COMMAND SHOULD BE INITIATED FROM THE CONTROL PANEL PRIOR TO CONNECTION OF CIRCUITS CONTROLLED BY THE MODULE.

One Year Limited Warranty

Hochiki America (HA) warrants its digital communication modules to be in conformance with its own plans and specifications and to be free from defects in materials and workmanship under normal use and service for a period of one (1) year from date of delivery. All warranties are void and HA is not obligated to repair or replace equipment which has been repaired by others, abused, improperly installed, altered or otherwise misused or damaged or exposed to conditions outside the products specifications in any way. HA will not be responsible for any dismantling, reassembling or re-installation charges. Please contact HA's Sales department for proper procedure for claims and return of merchandise. This warranty is in lieu of all other warranties expressed or implied.